

# Exquisite L.A.

*Exquisite L.A.* is a blueprint of a collective shape. Drawing on the history of the Surrealist Exquisite Corpse, we wish to create a communal portrait of the current Los Angeles art world.

Consisting of photographic portraits, and spanning a year of consecutive *Carla* issues, each artist photographed introduces the next with a short text accompanying their portrait, outlining their connection or interest in the artist that will follow them in the series! This is an ongoing story of Los Angeles—its twists and turns, side streets, and freeways.

Rooted in classical portraiture, the photographs presented capture the artists in a neutral space, isolated from their work or studio. Their individual gaze, pose, or gesture becomes a continuous visual marker for the exquisite corpse that is Los Angeles.

Issue 5:

Fay Ray → John Baldessari → Claire Kennedy →

Issue 6:

Analia Saban → Ry Rocklen → Sarah Cain →

Issue 7:

Brenna Youngblood → Todd Gray → Rafa Esparza →

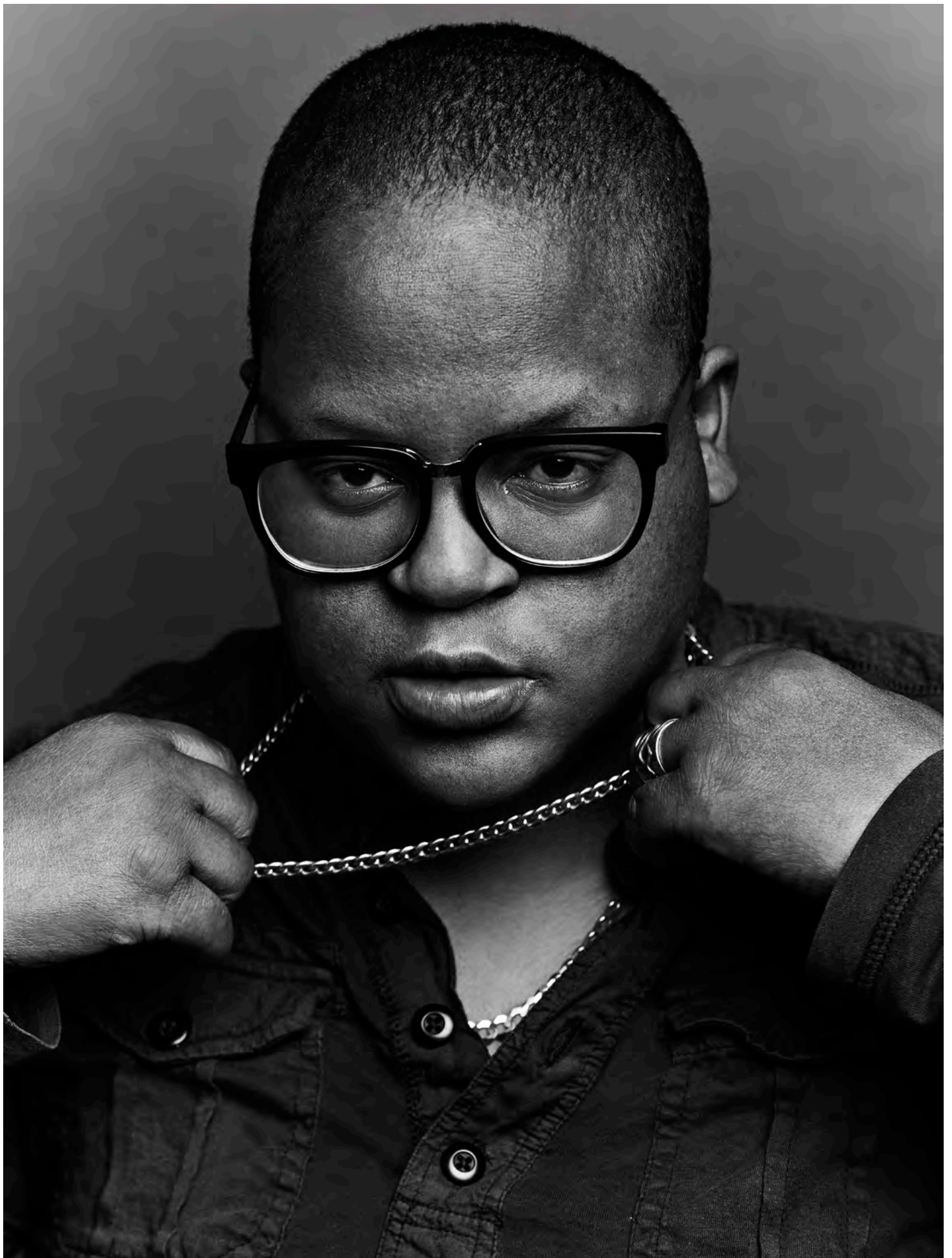
Issue 8:

taisha paggett →

1. For the full introduction to this project, and to view previous portraits, please refer to *Carla* issue 5, which was published in July 2016, or view online at [contemporaryartreview.la/exquisite-l-a/](http://contemporaryartreview.la/exquisite-l-a/).

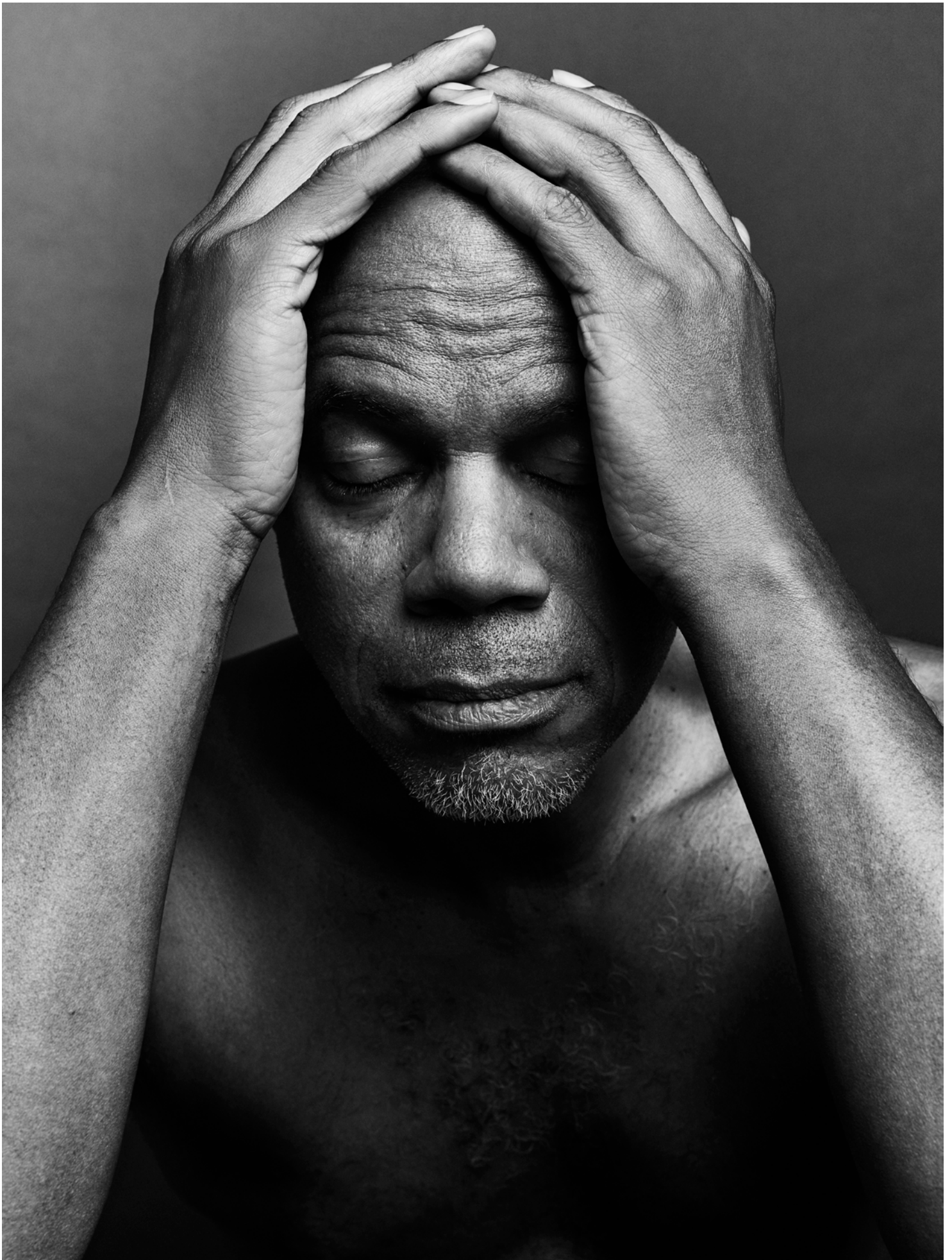
# Brenna Youngblood on Todd Gray

I feel blessed to have met Todd as a student and to now be true friends. He is thoughtful, funny, daring, and extremely creative.



# Todd Gray on Rafa Esparza

I selected Rafa because I was very moved by the installation he made for the *Made in L.A.* exhibition. The work referenced history, his family, and community in a way that was both loving and critical—complimentary and nuanced components in art I see all too rarely.



# Rafa Esparza on taisha paggett

Even in her stillness, taisha moves my world in such profound ways that I refuse to imagine being in one without her.



